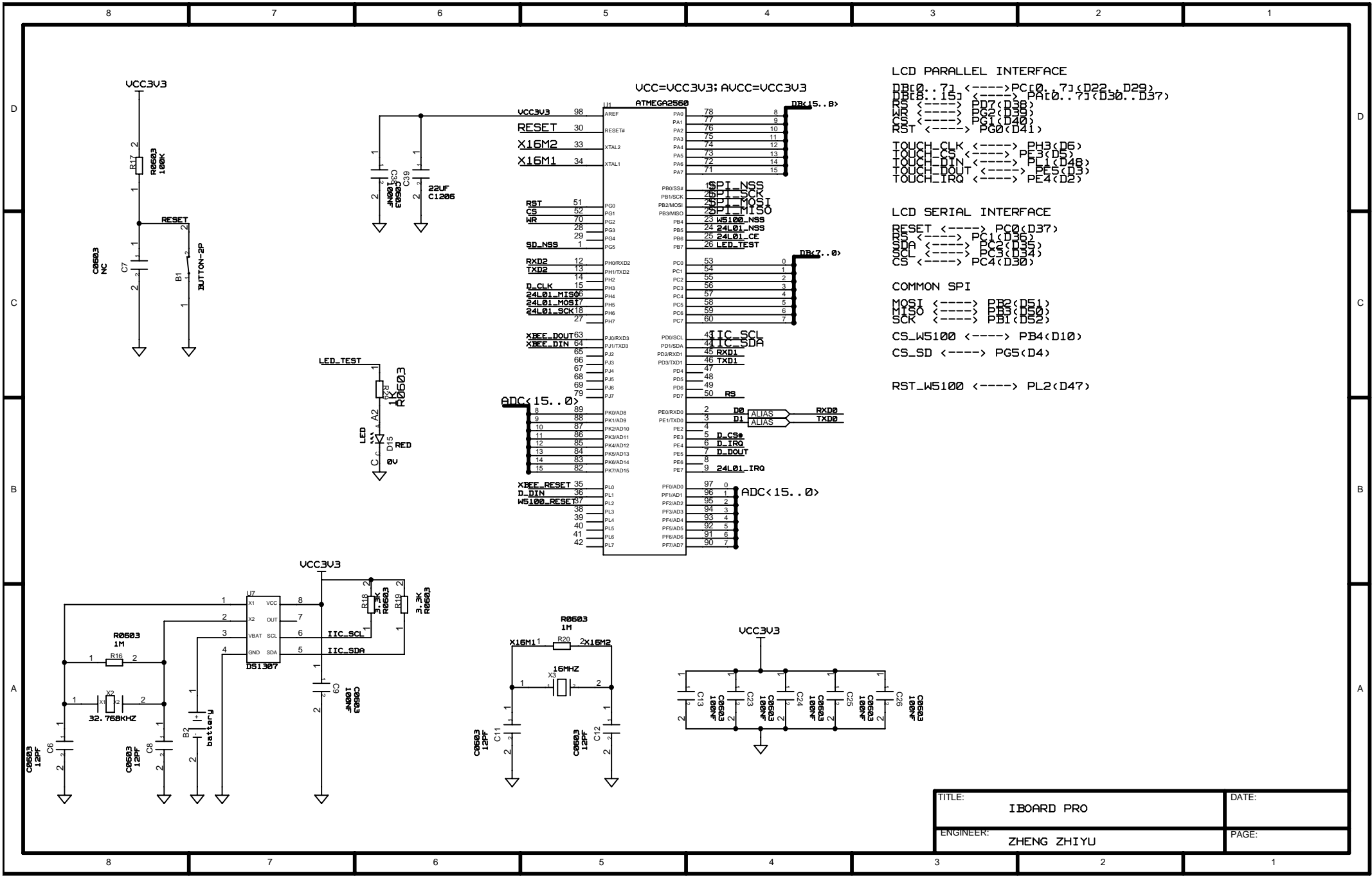


TITLE:	IBOARD PRO	DATE:
ENGINEER:	ZHENG ZHIYU	PAGE:



LCD PARALLEL INTERFACE

```

DB[0..7] <----> PC[0..7] (D22..D29)
DB[8..15] <----> PA[0..7] (D30..D37)
RXD0 <----> PD7 (D38)
TXD0 <----> PD6 (D39)
PC[0..4] <----> PC[0..4] (D40)
RST <----> PC0 (D41)
TOUCH_CLK <----> PH3 (D6)
TOUCH_CS <----> PF3 (D5)
TOUCH_DIN <----> PF1 (D48)
TOUCH_DOUT <----> PF5 (D3)
TOUCH_IRQ <----> PE4 (D2)
  
```

LCD SERIAL INTERFACE

```

RESET <----> PC0 (D37)
DIN <----> PC1 (D38)
DOUT <----> PC3 (D39)
CS <----> PC4 (D30)
  
```

COMMON SPI

```

MOSI <----> PF2 (D51)
MISO <----> PF3 (D50)
SCK <----> PF1 (D52)
  
```

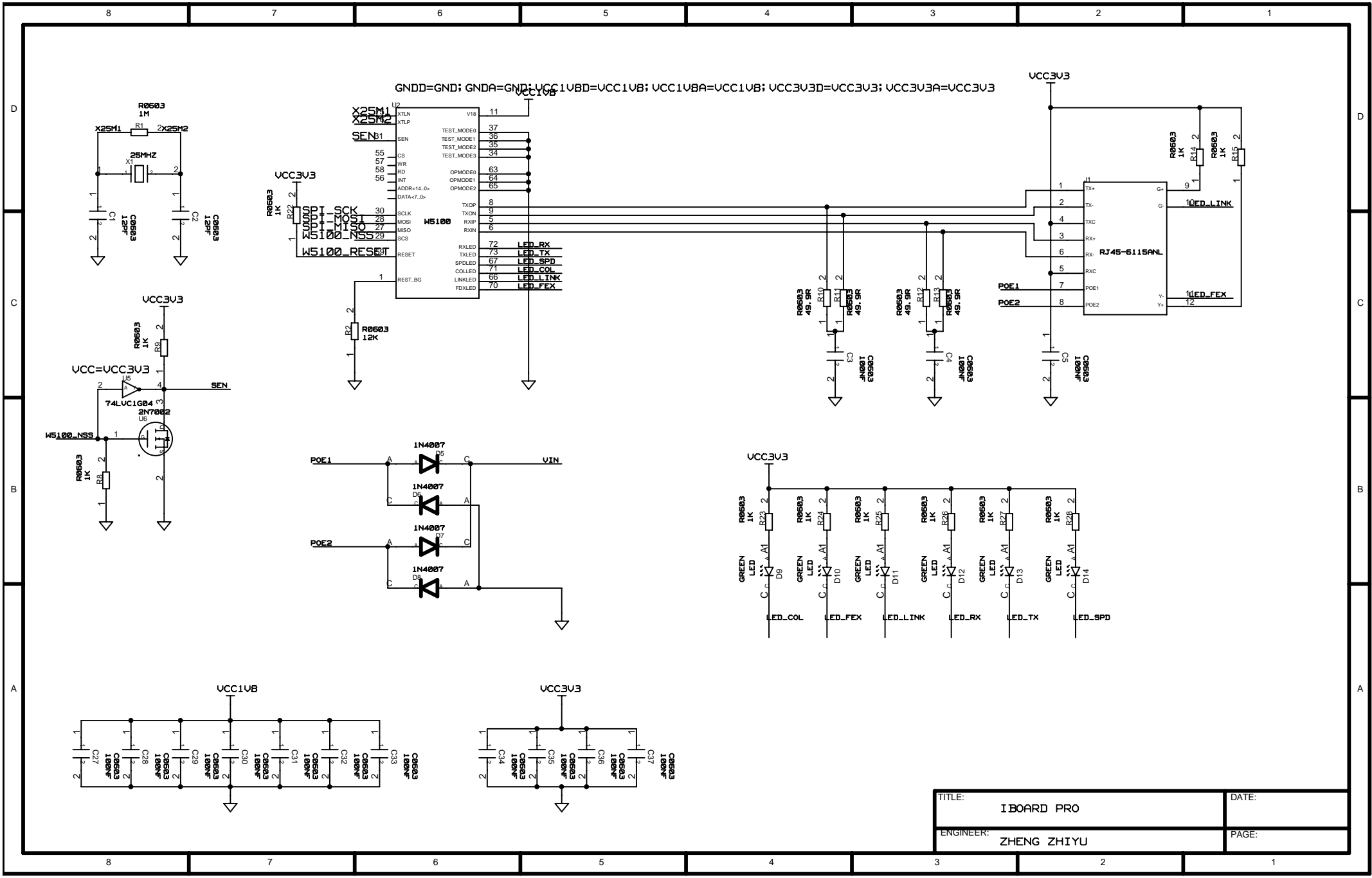
```

CS_W5100 <----> PB4 (D10)
CS_SD <----> PG5 (D4)
  
```

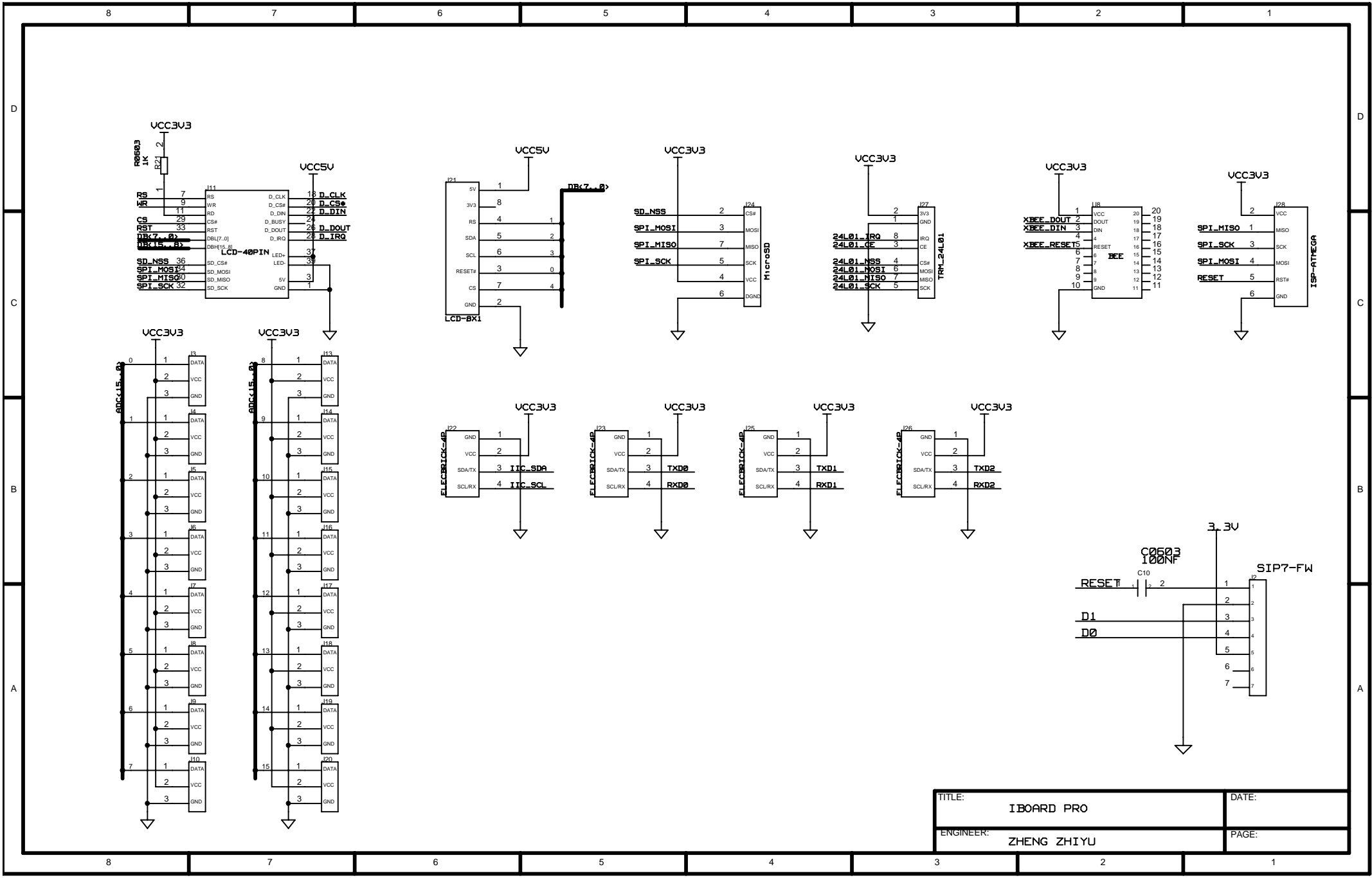
```

RST_W5100 <----> PL2 (D47)
  
```

TITLE:	IBOARD PRO	DATE:	
ENGINEER:	ZHENG ZHIYU	PAGE:	



TITLE: IBOARD PRO	DATE:
ENGINEER: ZHENG ZHIYU	PAGE:



TITLE: IBOARD PRO	DATE:
ENGINEER: ZHENG ZHIYU	PAGE: